

I. Preparation and inspection

Inspect the PediStirrup for damage and that it is clean

II. Assembly and Mounting

Mount the PediStirrup to the operating table and fixate them by using the rail clamps

Note: Always support the patient until the patient is fixated in the leg support

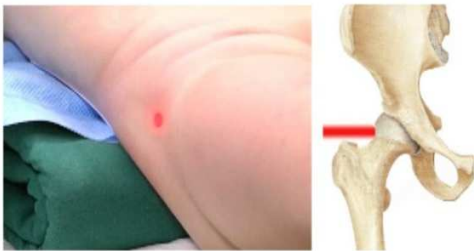
III. Selection of the appropriate shoe size

Leave at least 2-3cm of space between the upper end of the shoe and the hollow of the knee



IV. Aligning

Align the primary joint of the PediStirrup with the hip joint of the patient by utilizing the light beam



V. Pre-positioning of the Shoes

When using shoe size 1 and 2 always place the quick release plate into the upright position



Mount the selected shoe size

VI. Pre-positioning of the Arms

Extend the telescopic arm to the appropriate length and rotate the device in horizontal and vertical direction for the appropriate position:



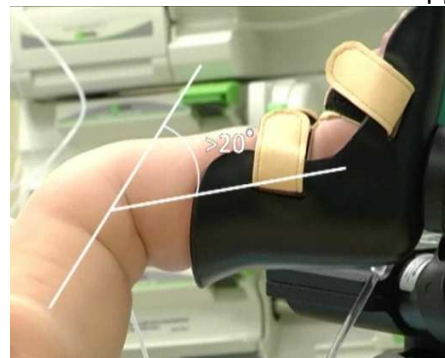
Turn large part of the large knob for free rotation
Turn small part of the knob for fine adjustments

VII. Positioning

Place a leg into the leg support

Fixate the foot and calf in the shoe

Position the foot and calf in the appropriate position



Note: The leg has to be positioned with a slightly bended leg (about 20°) to avoid overstretching

VIII. Checking

If during the operation re-positioning is required, check the requested change without sterile sheets

Note: The hip should not move in relation to the operating table during re-positioning



Note: Always support the legs of the patient during positioning or re-positioning

IX. Sterile covering

Cover the legs according to the local procedures with sterile sheets



X. Sterile position change

Note: Always support the legs of the patient during positioning or re-positioning

Note: Both legs have to be re-positioned at the same time by two persons



XI. Completing the procedure

Remove the sterile sheets

Remove the leg from the leg support



XII. De-assembling

Remove the shoe from the quick release plate

Shorten the telescopic arm to its minimum length

Turn/rotate the arms in vertical downwards position for storage



Note: Always support the leg support when locking mechanisms are unlocked

XIII. Cleaning and Storage

Clean the surface of the leg support with soft soap or cleaning alcohol according local cleaning procedures



Note: Do not use cleaning agents containing Chlorine

Note: Do not submerge the device in a soap bath